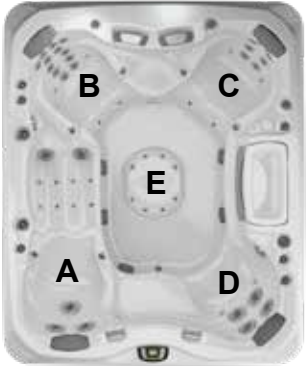


# Sundance® Spas 880™ Maxxus™ Specifications

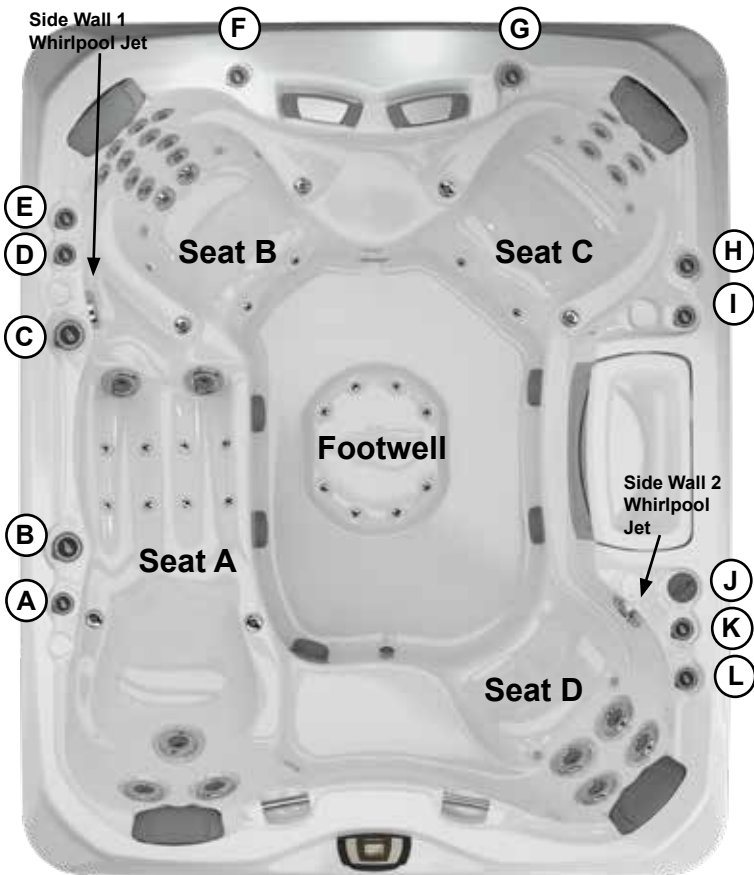
<b>Dimensions:</b> .....	91" x 110" x 41.5" (231.14 cm x 279.4 cm x 105.41 cm)	
<b>Perimeter</b> .....	402" (1021.1 cm)	
<b>Seating Capacity:</b> .....	6 Adults	
<b>Dry Weight:</b> .....	1,143 lbs (518.5 kg)	
<b>Filled Weight (Spa Volume):</b> .....	6,898 lbs (3,129 kg)	
<b>Filled Weight (Average Fill):</b> .....	5,647 lbs (2,561 kg)	
<b>Water Capacity (Spa Volume):</b> .....	690 US Gal (2,612 Liters)	
<b>Water Capacity (Average Fill):</b> .....	540 US Gal (2,044 Liters)	
<b>Controls:</b> .....	880 iTouch Interface LCD Control, Displays Temperature, Time, Cycles and Jet/Air System Control. Offers Customizing of Filtration Cycles, Lighting, Water Temperature Setting and other features	
<b>Water Delivery:</b> .....	3 TheraMax High-Flow Pumps and 8-Hour Dynamic Flow Circulation System	
<b>Pump 1:</b> .....	North America (60 Hz): 1-Speed/2.5 HP Continuous, 11.3A Max., 56 Frame <b>Export (50 Hz): 1-Speed/2.0 HP Continuous, 7A Max.</b>	
<b>Pump 2:</b> .....	North America (60 Hz): 1-Speed/2.5 HP Continuous, 11.3A Max., 56 Frame <b>Export (50 Hz): 1-Speed/2.0 HP Continuous, 7A Max.</b>	
<b>Pump 3:</b> .....	North America (60 Hz): 1-Speed/2.5 HP Continuous, 11.3A Max., 56 Frame <b>Export (50 Hz): 1-Speed/2.0 HP Continuous, 7A Max.</b>	
<b>Pump 4:</b> .....	High-Output Dynamic Flow, 24-Hour programmable, factory default set to 8-Hour Filter/Circulation Pump (35 gpm) Programmable for Daily Start Time and Duration	
<b>Total Hydrojets:</b> .....	<b>65</b>	
<b>Seat A Jets:</b> .....	2 Fluidix Intelli-Jet, 2 Fluidix Nex, 2 Pulsator, 8 Focus-Relief®, 3 Vortex	
<b>Seat B Jets:</b> .....	12 Fluidix-ST, 2 Fluidix Nex, 2 Pulsator, 4 Accu-Pressure, 1 Whirlpool (sidewall)	
<b>Seat C Jets:</b> .....	6 Fluidix Reflex, 2 Fluidix Nex, 2 Pulsator, 2 Accu-Pressure	
<b>Seat D Jets:</b> .....	4 Vortex, 2 Fluidix Nex, 1 Whirlpool (sidewall)	
<b>Footwell Jets (E):</b> .....	8 Accu-Pressure	
<b>Air Blower:</b> .....	High-efficiency, 1-Speed	
<b>Aromatherapy Delivery:</b> .....	6 Silent Air® Injector Jets with Quiet High Speed Air Pump	
<b>Air Controls/Massage Selectors:</b> .....	8/2 (Standard air control with LED lights and massage selector with LED lights)	
<b>Filter:</b> .....	MicroClean® Ultra Filtration System, 130 ft² (2 interlocking cartridge filters)	
<b>Water Treatment:</b> .....	Automatic Brominator and Dynamic Flow Circulation System; Factory installed CLEARRAY Active Oxygen™ Clear Water System	
<b>Lighting:</b> .....	Multicolored LED Lighting System (2 Waterfall, 2 Footwell, 8 Air controls, 2 Massage Selectors, 2 Backlit handrails, Exterior lights)	
<b>Skirt Cabinet (SunSide™):</b> .....	Modern Hardwood, Brushed Gray and Vintage Oak (Equipped with Standard Exterior Lights)	
<b>Shell Colors:</b> .....	Platinum, Celestite (Gypsum), Monaco, Midnight, Porcelain	
<b>Handrails:</b> .....	Two High Quality Stainless Steel with backlit LED lighting	
<b>ComfortTone Headrests:</b> .....	Four, 1-Piece Gray	
<b>Heater:</b> .....	Low Flow 5.5 kW With Titanium Element <b>Export (50 Hz): Low Flow 5.5 kW with Titanium Element</b>	
<b>Electrical Requirements:</b> .....	North America (60 Hz): 240 VAC@50A or 60A; <b>Export (50 Hz): 230-240 VAC@1x40A, 2x25A, 1x25A/1x32A (see manual for more configurations); or Suitable Rated Circuit Breaker To Comply With Local Electrical Regulations. Certain Countries May Require 2 Power Inputs; Two GFCI/RCD Breakers are Required For This Configuration.</b>	
<b>Limited Warranty*:</b> .....	North America (60 Hz): 10 Years Shell, 7 Years Shell Surface, 5 Years Plumbing Component Leaks, 5 Years Equipment and Controls, 5 Years Cabinet, 5 Years Jets, 2 Years Lights, 1 Year Stereo <b>Export (50 Hz): 10 Years Shell, 7 Years Shell Surface, 5 Years Plumbing Component Leaks, 5 Years Equipment and Controls, 5 Years Cabinet, 5 Years Jets, 2 Years Lights, 2 Years Stereo</b>	
<b>Waterfall Feature:</b> .....	Adjustable Flow Rate; Colored Lighting	
<b>Audio System (Optional):</b> .....	Factory Installed BLUEWAVE® 2.0 Wireless Spa Stereo System with Auxiliary 3.5 mm headphone jack connection, Bluetooth® compatible, 4 premium speakers and a powered subwoofer	
<b>Special Features:</b> .....	MicroClean® Plus Versatile Filter Lid, <b>Optional</b> Filter Lid Pillow seat, <b>Optional</b> (Factory Installed) SmartTub® Module	

\*(See Warranty Document for Specific Details)

Dimensions/Specifications Subject To Change Without Notice

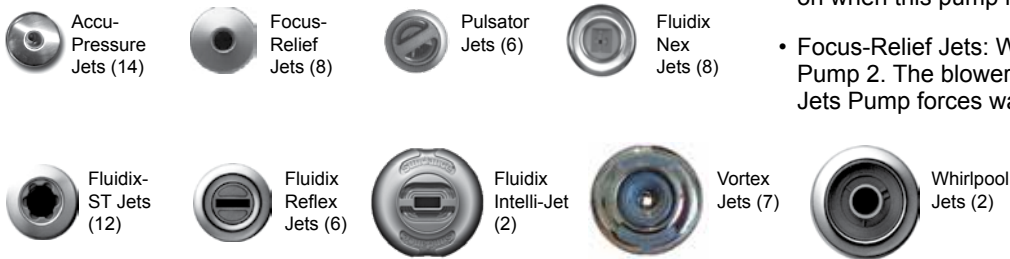
# Sundance Spas 880 Maxxus

## Operation/Seat Depths



- (A)** Air Control - Activates Seat A Jets (2 Fluidix Intelli-Jet, 2 Fluidix Nex, 2 Pulsators, 3 Vortex)
- (B)** Massage Selector [Pump 2] - Adjusts Massage Level Between Seat A Jets and Seat D Jets
- (C)** Massage Selector [Pump 3] - Adjusts Massage Level Between the Seat B Jets + both Wrist Jets and Lower 4 Accu-Pressure Jets + both Side Wall Whirlpool Jets
- (D)** Air Control - Activates Mid Seat B Jets (6 Fluidix-ST, 2 Pulsators)
- (E)** Air Control - Activates Upper Seat B Jets (2 Fluidix Nex, 6 Fluidix-ST)
- (F)** Air Control - Activates Lower Seat B Jets (4 Accu-Pressure) and Side Wall 1 Whirlpool Jet
- (G)** Air Control - Activates Center Footwell Jets (8 Accu-Pressure)
- (H)** Waterfall Selector [8-Hour Circ. Pump] - Controls Waterfall Output
- (I)** Air Control - Activates Seat C Jets (2 Fluidix Nex, 2 Pulsators, 6 Fluidix Reflex, 2 Accu-Pressure)
- (J)** SunScents Dispenser
- (K)** Air Control - Activates Side Wall 2 Whirlpool Jet in Seat D
- (L)** Air Control - Activates Seat D Jets (4 Vortex, 2 Fluidix Nex)

### 65 Total Jets



- Jets Pump 1: Seat C Jets and Footwell Jets are always on when this pump is running
- Focus-Relief Jets: Work with both the blower and Jets Pump 2. The blower introduces air to the jet and the Jets Pump forces water through.

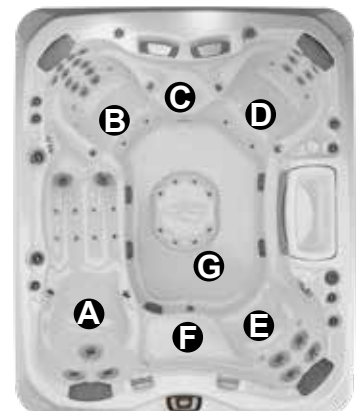
Spa Operation Subject To Change Without Notice

## SEAT DEPTHS

**A = 26.00" (66.04 cm)**  
**B = 27.00" (68.58 cm)**  
**C = 20.00" (50.80 cm)**  
**D = 25.50" (64.77 cm)**

**E = 26.00" (66.04 cm)**  
**F = 21.00" (53.34 cm)**  
**G = 35.00" (88.90 cm)**

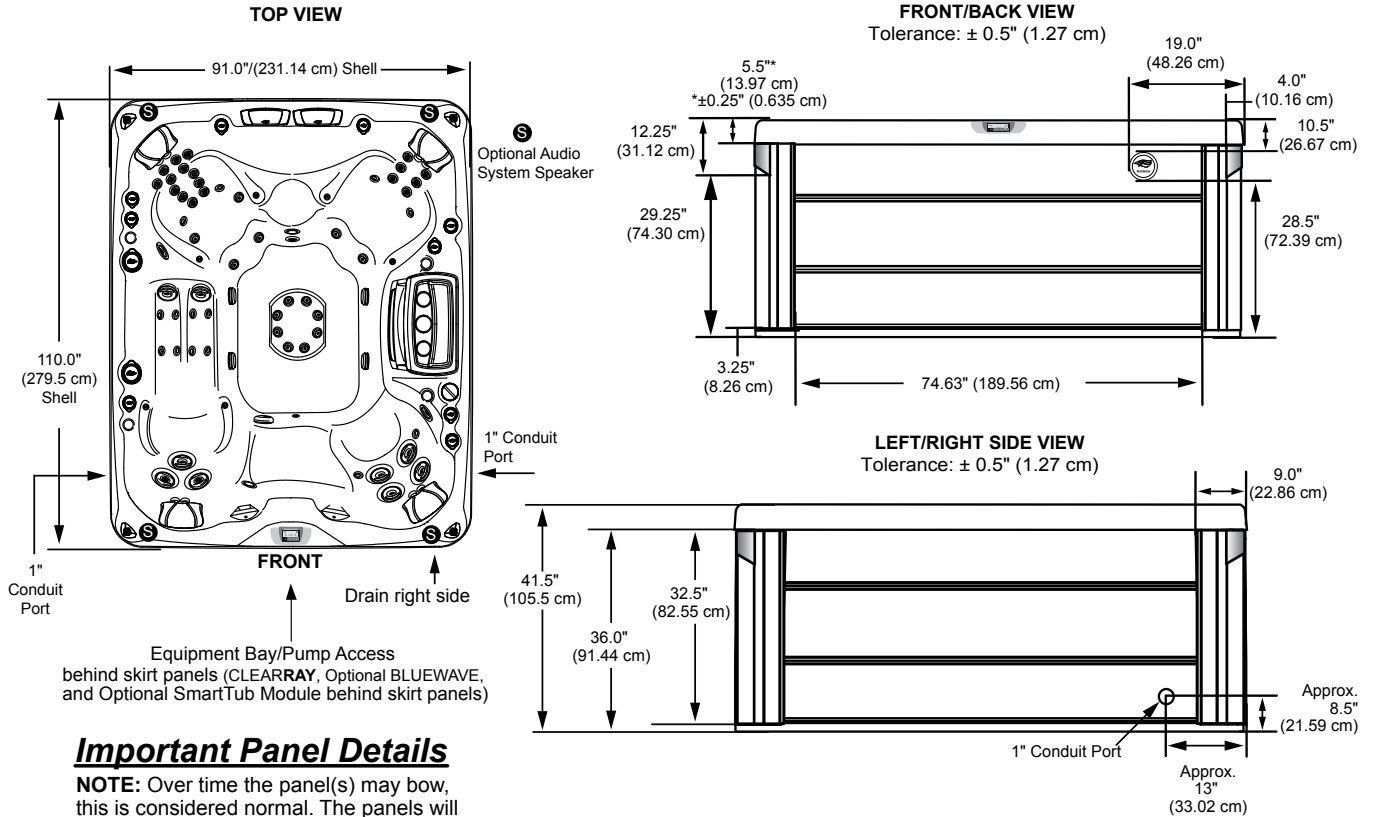
Listed dimensions represent distance from top of acrylic to lowest point in seat. **Tolerance ± 0.5" (1.27 cm).**



Dimensions/Specifications Subject To Change Without Notice

# Sundance Spas 880 Maxxus

## Portable Dimensions

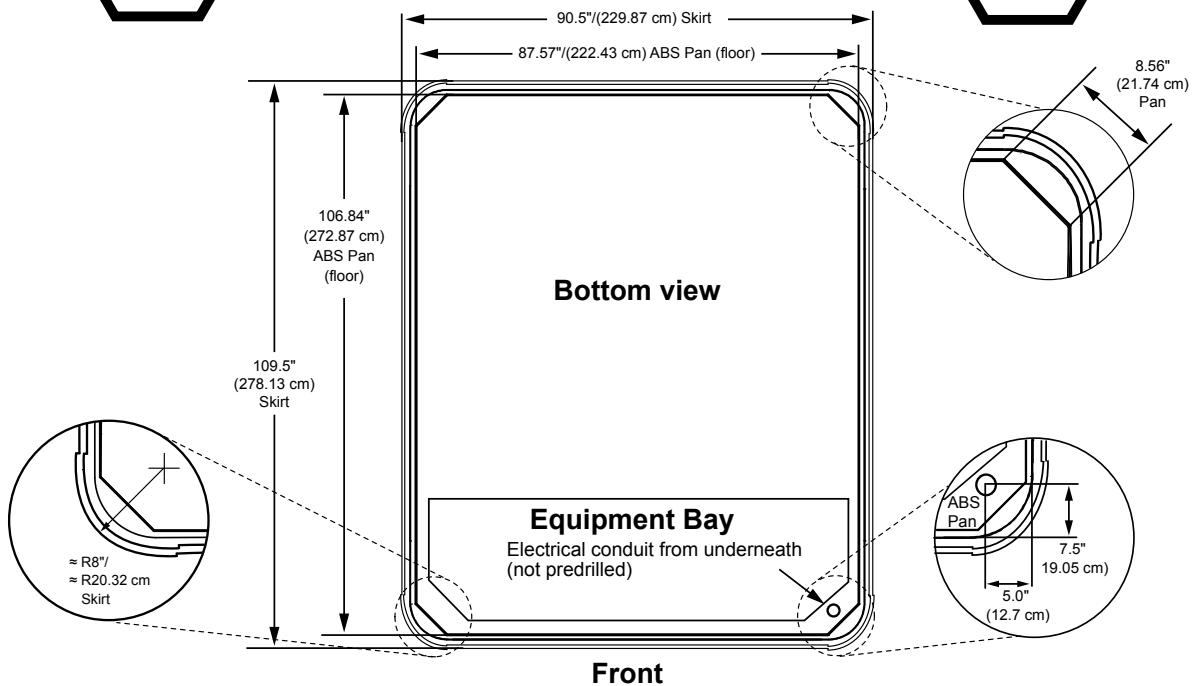


### Important Panel Details

**NOTE:** Over time the panel(s) may bow, this is considered normal. The panels will straighten out when reinstalled into the mounting channel. Place one end of the panel into the channel first then flatten the panel and insert the other end.



**IMPORTANT! Always measure each hot tub for exact dimensions BEFORE designing its foundational support and/or decking.**



Dimensions/Specifications Subject To Change Without Notice